

# BEYOND

## Registering your account & navigating BEYOND

prior to the Hunter Jobs & Future Pathways Expo



Outcomes:	
Australian Blueprint for Career Development   Work Education 7–10   NSW Education Standards   Work Studies Stage 6 Content Endorsed Course Syllabus	
Australian Blueprint for Career Development	1.3.1 Understand how individual characteristics such as interests, skills, values, beliefs and attitudes contribute to achieving personal, social, educational and professional goals.
<b>Area A – Personal management competency</b> 1. Build and maintain a positive self-concept	
<b>Area B – Learning and work exploration competency</b> 5. Locate and effectively use career information	5.2.10 Improve strategies for locating, understanding and using career information.
<b>Area C – Career building competency</b> 7. Secure/create and maintain work	7.3.3 Explore the services or initiatives that support people's transitions.  7.4.6 Investigate the career planning/employment and recruitment services available through organisations (eg, government, educational institutions, business/industry and community agencies).
Work Studies Stage 6 Content Endorsed Course Syllabus	1. Investigates a range of work environments 2. Examines different types of work and skills for employment 4. Assesses pathways for further education, training and life planning 5. Communicates and uses technology effectively
Work Education 7–10   NSW Education Standards	<ul style="list-style-type: none"> <li>Information and communication technology capability</li> <li>Personal and social capability</li> </ul>

### Lesson Overview

This lesson guides users through the process of registration/account creation for the BEYOND website. It will guide students through the key features of navigating the BEYOND website.

### Resources required for this lesson

- Access to a computer with online capabilities for each student
- Headphones for each student
- Smart board / Projector

### Tech tip:

Bookmark this page for ease of future accessibility – you might like to show your students how to do this also.

### Introduction (5 mins)

Introduce the Beyond platform. [This](#) might help!

### Learning Intentions

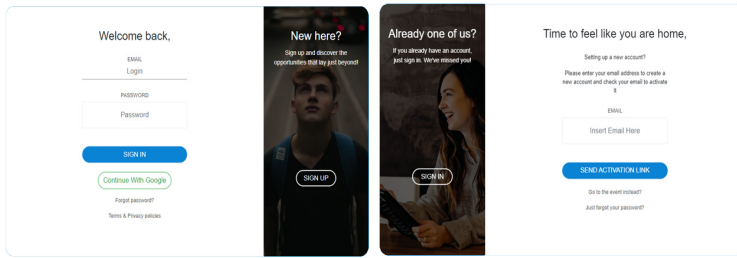
- To know how to register and set up a profile in BEYOND
- To know how to navigate the BEYOND platform

### Success Criteria

- I will be able to log into BEYOND
- I will have a profile set up in BEYOND
- I can navigate the BEYOND platform

## Step 1: Registration

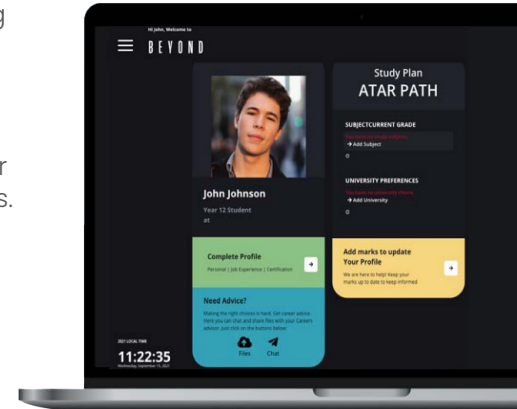
- Click [here](#) and click SIGN UP
- Insert your email address & hit SEND ACTIVATION LINK



- Check your email for the Activation Email
- Complete your registration by entering your details.
- After creating your password [login](#) to the platform

## Step 2: Set up your profile

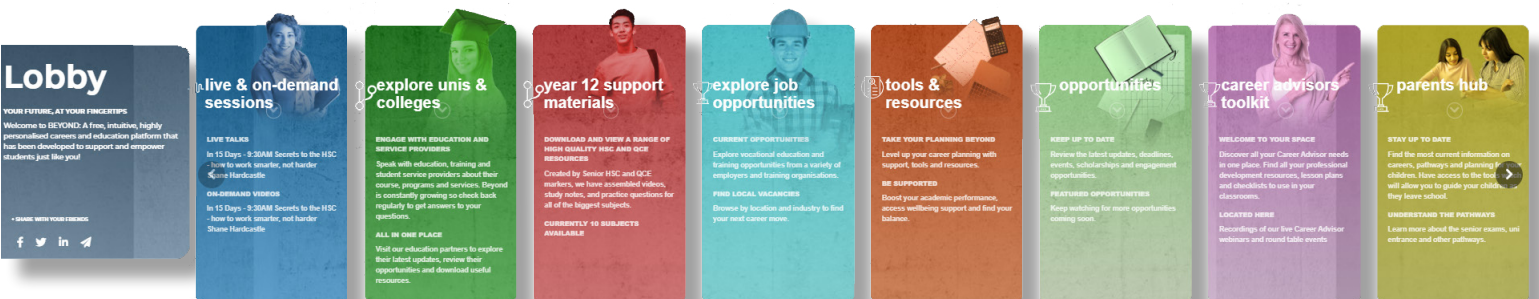
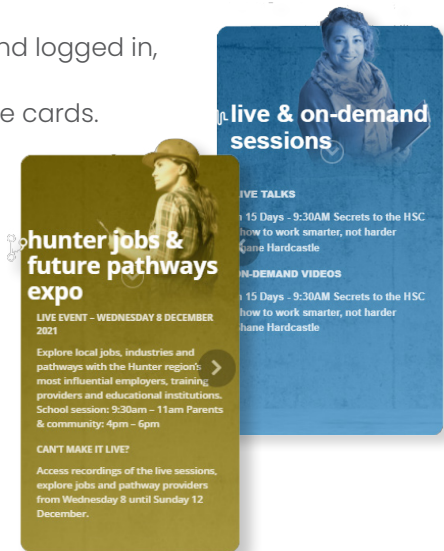
- Select the small icon in the top right hand corner
- Add your details starting with the subjects you are studying and complete the rest of your profile sections.



## Navigating the platform (10 mins)

1. Teacher demonstration first on screen: once you have created an account and logged in, visit the Lobby.
2. Show students the different cards, and how to scroll across the screen to more cards.
3. The three lines in the top left-hand corner of the screen are the hamburger menu - at anytime you can click there and a drop down menu will list the cards you can access.
4. To return to the Lobby from any screen click the BEYOND word in the top left hand corner of the screen.
5. From the Lobby - click on each of the cards, and show the students what is in each section. Demonstrate how to click through the moving cards in the Pathways Hall and HSC Support material halls.

\* For the Hunter Jobs and Future Pathway Expo there will be a separate card in the Lobby they click on to access the exhibitors. Live webinars will be available through the 'live & on-demand' sessions card.



## Students navigate the platform (10 mins)

Give students time to navigate the platform themselves, exploring all the different features, and how they will access the Hunter Jobs and Future Pathway Expo when it goes live.

## Conclusion (5 mins)

Conclude lesson ensuring all students have completed their registration and profile and make sure they understand how to navigate the platform ready for the Hunter Jobs Fair and Future Pathways Expo (live on Wednesday 8 December).